

# A REQUEST FOR PROPOSAL FOR PERSONAL SERVICES CONTRACT

## Department of Highways Professional Services Procurement Bulletin 2013-02 Hardin / Ring Road Extension / 4-198.00

This document constitutes a Request for Proposals for Personal Service Contract from qualified individuals and organizations to furnish those services as described herein for the Commonwealth of Kentucky, Department of Highways.

### **I. PROJECT DESCRIPTION**

County – Hardin

Route – KY 3005 between the Western Kentucky Parkway and I-65 including a new Interchange at I-65.

Item No – 4-198.00

Project Description – Preliminary Engineering for the Extension of Ring Road (KY 3005) from the Western Kentucky Parkway to I-65

### **II. PROJECT INFORMATION**

Project Manager – John W. Moore, P.E.

User Division - Highway Design

Approximate Fee – Preliminary Engineering & Environmental (\$1,000,000) Lump Sum Contract

Project Funding – State Construction Priority (SPP)

### **III. PURPOSE AND NEED**

Purpose: The purpose of this study is to improve the connectivity and mobility between I-65 and US 31w to the south and east of Elizabethtown and to US 62 and I-65 north of town.

Need: Ring Road (KY 3005) is currently being extended to the WK Parkway. The 1987 Planning Study recommended this roadway be extended on to I-65 and beyond to US 31w. This would complete the final section of this project. Needs include connectivity for freight, mobility, and relief on I-65 during accidents.

### **IV. DBE REQUIREMENT**

None

### **V. SCOPE OF WORK**

The selected consultant will be responsible to provide Preliminary Engineering, including the preparation of Engineering Studies, Identification of appropriate Typical Sections, identifying any Utility Impacts, performing Drainage Design, Developing dependable Cost Estimates, preparing documents for possible Public Meetings and providing documents and/or plans to be used in obtaining an Approved Environmental Document which is anticipated to be a CE Level 3.

As part of the Preliminary Engineering the Consultant will be required to conduct sufficient studies to satisfy the requirements of an Interchange Justification Study.

The initial contract will include the Interchange Justification Study, upon positive review by FHWA the contract will be advanced to Preliminary Engineering. This project can be advanced to Final Roadway Design with a Contract Modification. The Cabinet reserves the right to advertise the entire project for Final Roadway Design.

#### **VI. SPECIAL INSTRUCTIONS**

The Department may retain any of the services advertised here to be performed by in-house state forces.

Instructions for Response to Announcement can be found at:

<http://transportation.ky.gov/Professional-Services/Pages/Respond-to-an-Announcement.aspx>

#### **VII. AVAILABLE STUDIES**

[DNA Study for Item No. 4-198 - Ring Road Extension](#)

#### **VIII. METHOD OF DESIGN**

The selected consultant shall utilize the most recent CADD Standards for Highway Plans Policy.

#### **IX. ENVIRONMENTAL**

The selected Consultant will provide the Environmental Services for this project. It is anticipated that this will be a CE Level 3.

#### **X. PHOTOGRAMMETRIC SERVICES**

Department will provide aerial photogrammetry after the successful review of Interchange Justification Study.

#### **XI. STRUCTURE DESIGN**

The selected consultant shall provide the necessary engineering service to submit an Advanced Situation Folder(s) to the KYTC for the appropriate applicable structure(s). The structure design will be performed by the selected Consultant. Prequalification in the area of structure design is required to be identified in the Consultant's Response to Announcement.

#### **XII. GEOTECHNICAL SERVICES**

The Department will provide all Geotechnical Services required for this project.

#### **XIII. TRAFFIC**

Consultant will be responsible for Traffic Forecasts and modeling necessary for the Interchange Justification Study.

#### **XIV. PREQUALIFICATION REQUIREMENTS**

To respond to this project, the consultant project team must be prequalified in the following areas by the date of this advertisement.

#### ROADWAY DESIGN

- Rural Roadway Design
- Urban Roadway Design
- Surveying

#### STRUCTURE DESIGN

- Structure Design – Spans Under 500'

#### HIGHWAY PLANNING

- Traffic Forecasting

#### TRAFFIC ENGINEERING

- Traffic Engineering Services

#### ENVIRONMENTAL AQUATIC & TERRESTRIAL ECOSYSTEMS

- Macroinvertebrates
- Water Quality
- Botany
- Zoology
- Wetlands

#### ENVIRONMENTAL ARCHAEOLOGY & OTHER SERVICES

- Prehistoric
- Historic
- Highway Noise
- Air Quality Analysis
- Cultural Historic Analysis
- EIS Writing & Coordination

#### ENVIRONMENTAL & UST SERVICES

- Hazmat Preliminary Site Assessment (Phase I)
- UST Preliminary Site Assessment

### **XV. PROCUREMENT SCHEDULE**

Dates other than Response Date are tentative and provided for information only.

RESPONSE DATE • September 10, 2012 4:30 p.m. E.S.T. (Frankfort time)

FIRST SELECTION COMMITTEE • September 17, 2012

SECOND SELECTION COMMITTEE • October 1, 2012

PRE-DESIGN CONFERENCE • October 15, 2012

TENTATIVE DEADLINE FOR CONSULTANT FEE PROPOSAL • November 5, 2012

CONTRACT NEGOTIATIONS • November 19, 2012

NOTICE TO PROCEED • January 7, 2013

**XVI. PROJECT SCHEDULE**

Individual project schedules will be by letter agreement on a project by project basis.

INTERCHANGE JUSTIFICATION STUDY • May 15, 2013

PRELIMINARY LINE AND GRADE • May 15, 2014

DRAFT ENVIRONMENTAL SUBMITTAL • August 15, 2014

FINAL ENVIRONMENTAL SUBMITTAL • December 15, 2014

**XVII. EVALUATION FACTORS**

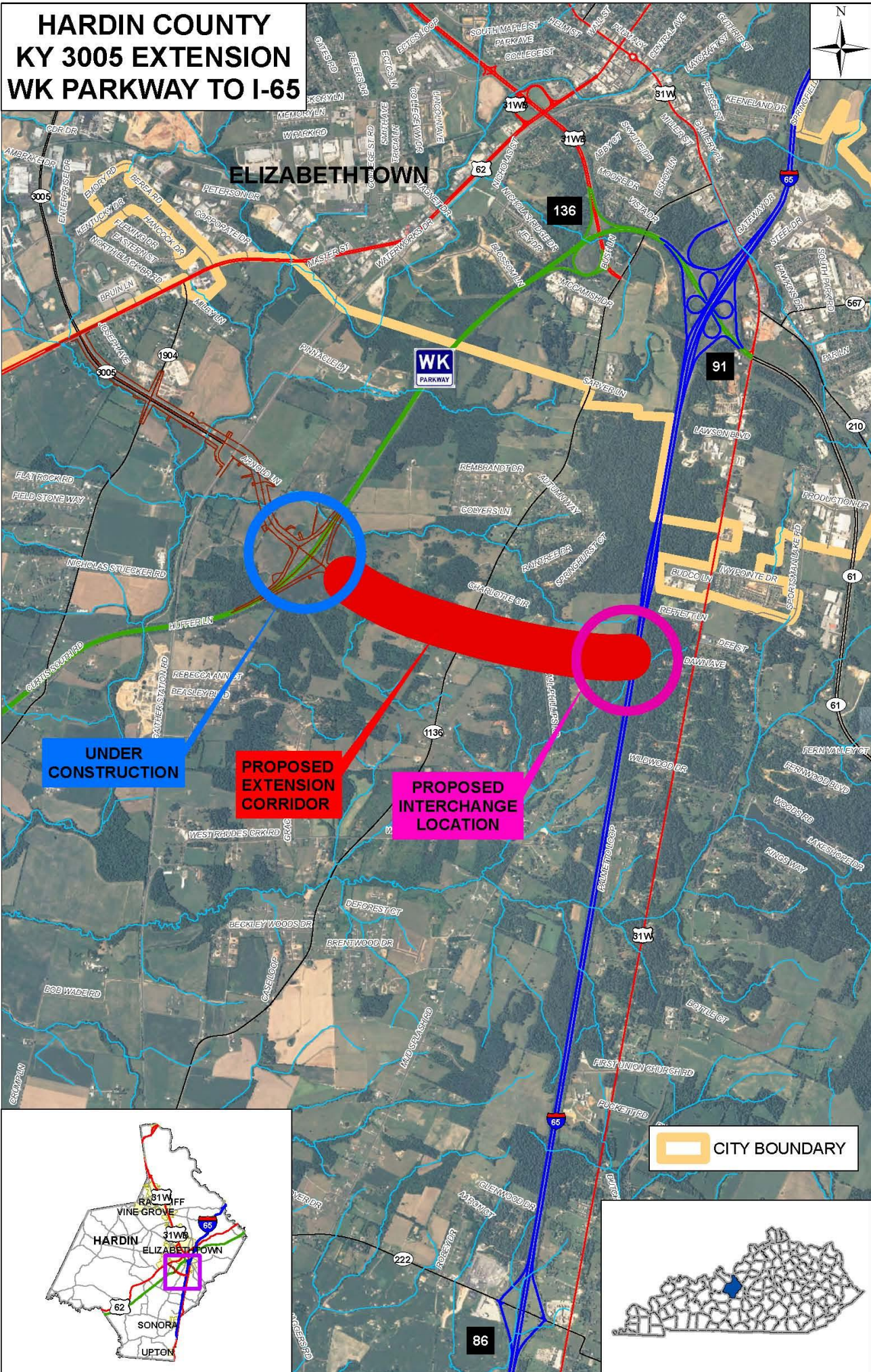
1. Relative experience of consultant personnel assigned to project team with highway projects for KYTC and/or federal, local or other state governmental agencies. (10 Points)
2. Capacity to comply with project schedule. (10 Points)
3. Past record of performance on projects similar in type and complexity. (10 Points)
4. Project approach and proposed procedures to accomplish the services for the project. (10 Points)
5. Consultant's offices where work is to be performed. (2 Points)

For state-funded projects, if a Selection Committee vote results in a tie between two (2) firms, one (1) of which will perform more of the work tasks in Kentucky than the other, then the former firm shall be ranked one (1) place ahead of the latter.

**XVIII. SELECTION COMMITTEE MEMBERS**

1. John Moore, P.E., User Division
2. Brad Eldridge, P.E., User Division
3. Sam Hale, P.E., Secretary's Pool
4. Tim Pyles, P.E., Secretary's Pool
5. David Eaton, Governor's Pool

# HARDIN COUNTY KY 3005 EXTENSION WK PARKWAY TO I-65



**UNDER  
CONSTRUCTION**

**PROPOSED  
EXTENSION  
CORRIDOR**

**PROPOSED  
INTERCHANGE  
LOCATION**

 **CITY BOUNDARY**

